

JFR Crew Locations

2022 Locations and Descriptions

Lac La Biche

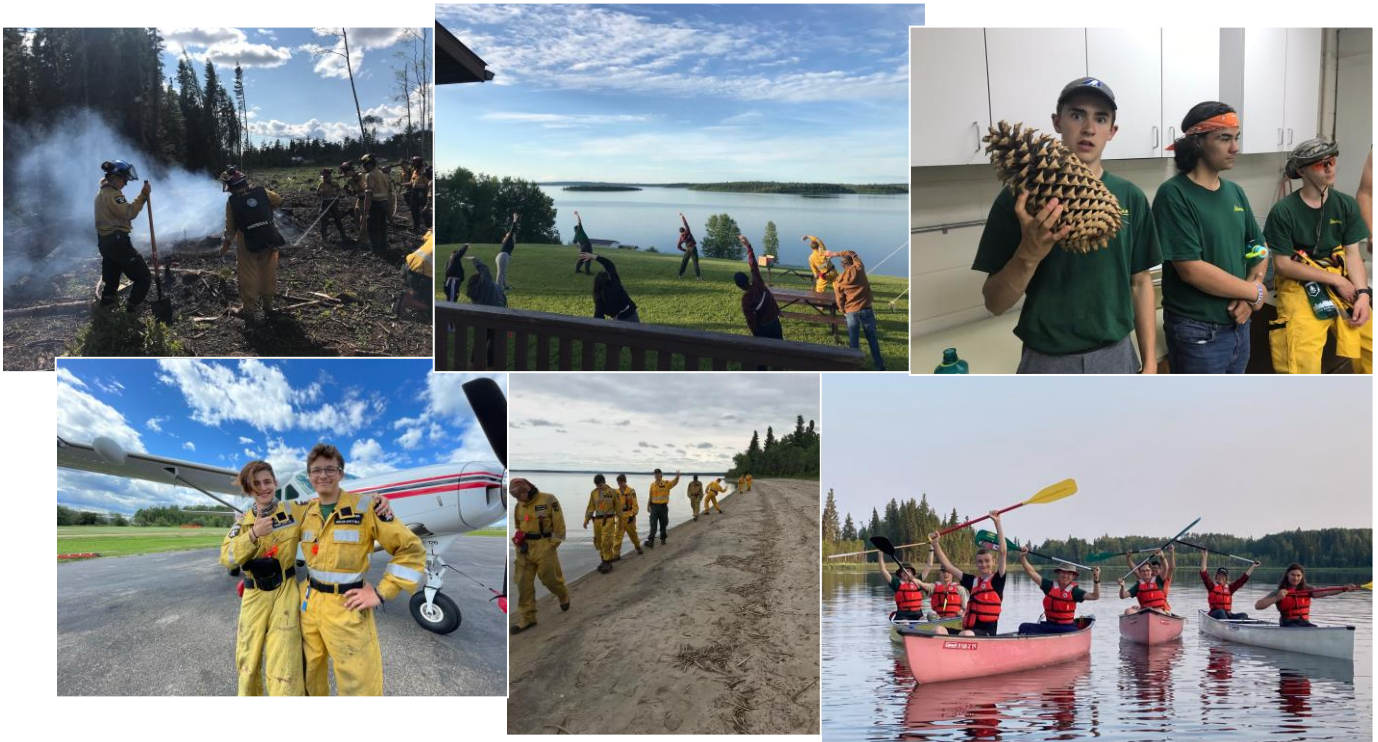
JFR Base Name: Beaver Lake Fire Base

Distance from Nearest Town/City: Lac la Biche is about 5km away

Brief Description: The crew stays on the base in two bunkhouses specifically for the JFR crew. Beaver Lake Fire Base has a beautiful view of Beaver Lake with lake access for canoeing and beach activities. Close by is the Bold Center with indoor and outdoor recreation rinks, curling rink, running track and more.

Top 5 JFR Crew Projects

- Paddle Canada Canoe Certification
- Visit to an Active Wildfire
- Tower Training and visit to Cowpar Tower via Helicopter
- Shaw Lake Legacy Trail project
- Guided tour and work project at Metis Crossing



Visit www.albertajfr.ca for more information

©2022 Government of Alberta | Published: January 2022

Classification: Protected A

Alberta